

# Burnaby Terminal Facility Overview



**February 24, 2016**

**Presenter: Richard Spence**



# Table of Contents

Topic	Slide No.
Terminal Information	3
Organizational Structure	4
Terminal Layout	5
Terminal Information	6-7
Products & Customers	8-9
Loading Rack	10-11



Abbreviations
BBL = 1 Barrel of Oil; a unit of volume for crude oil and petroleum products
1 BBL = 159 litres
MBBL = Thousands of barrels
MMBBL = Millions of barrels
1 Truck load of mogas = 360 BBL or 57,240 litres
1 Truck load of diesel = 320 BBL or 50,880 litres





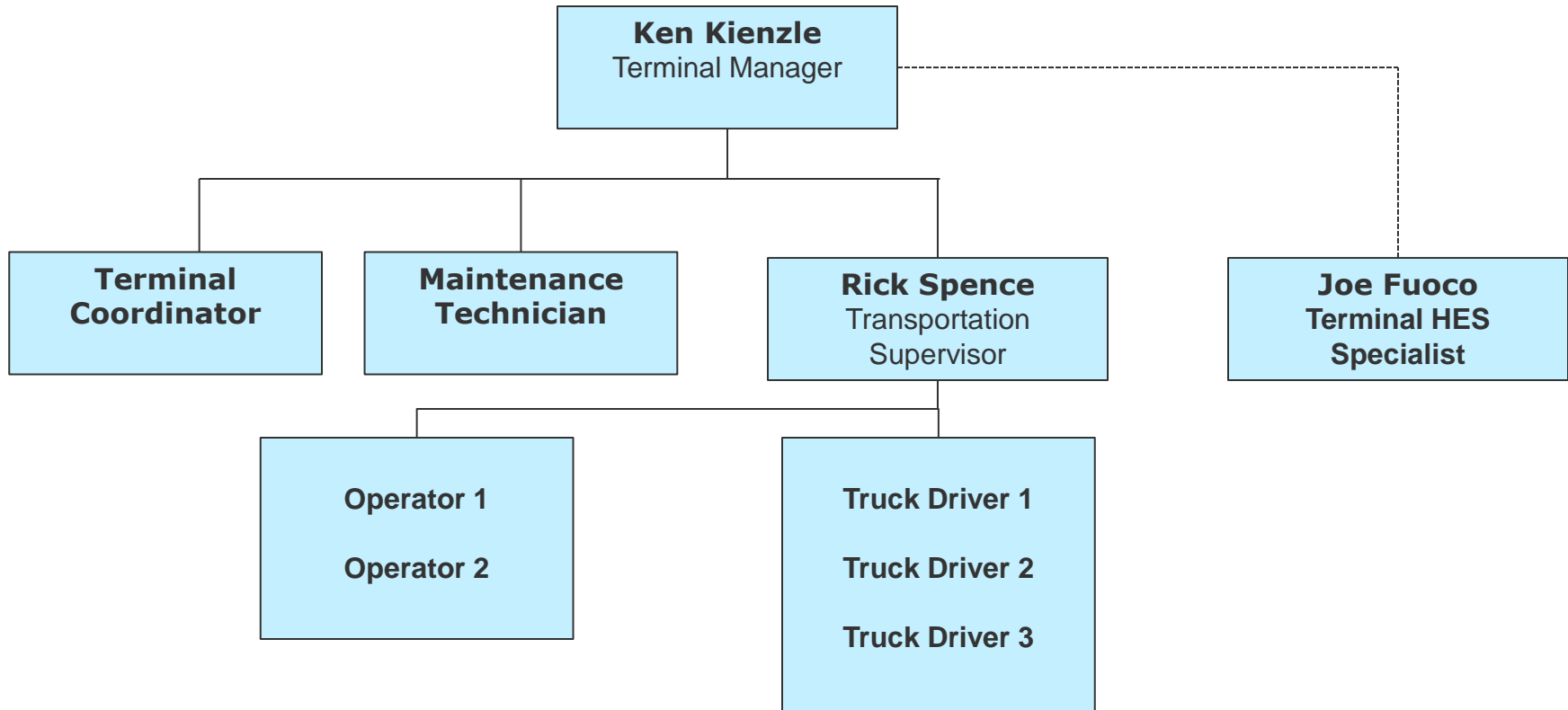
# Terminal Information

<b>Terminal Manager:</b>	<b>Ken Kienzle</b>
Terminal Name:	Burnaby Terminal (Transportation & Operations)
Address:	4403 Eton St, Burnaby, B.C. V5C 1K7
Telephone Number:	604 257 4034
Established:	1950's
Number of employees:	10
Number of truck loading positions:	3 finished product loading and 1 biofuels off-loading position
Number of Storage tanks (size):	Underground Additive Tanks only. Product tanks at Burnaby Refinery
Storage capacity:	1,000 bbl. for additives
<b>HES related incidents (2015):</b>	
Total Recordable Injury	0 TRI
Days Away From Work	0 DAWF
Motor Vehicle Crashes	0 MVC
Spills	0 Spill (no Loss Of Containment)
Fire	0 Fire

**Chevron Canada Marketing: To date – 1,747 Safe Days Worked**



# Burnaby Terminal Organizational Structure

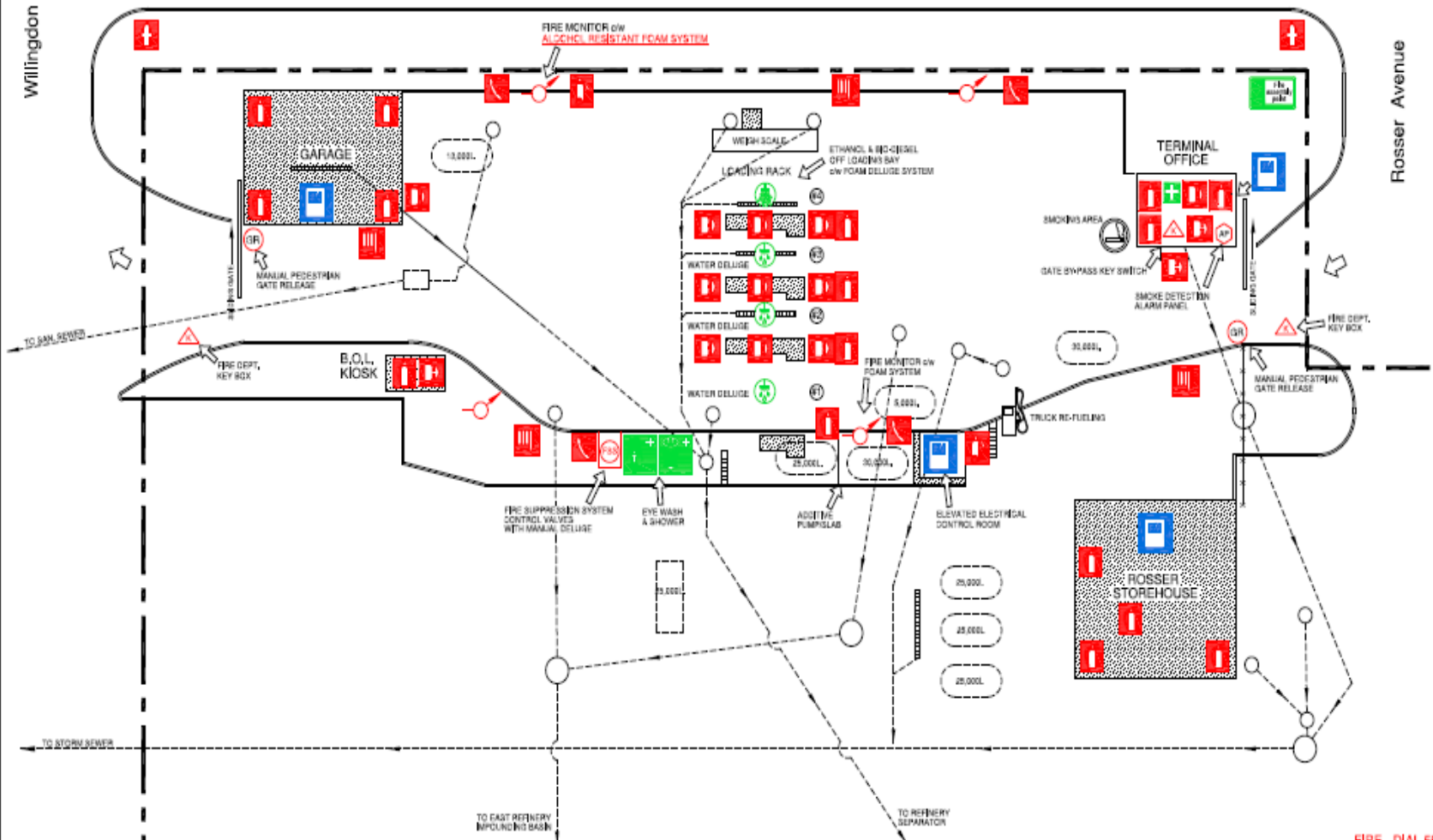


# Terminal Emergency Equipment Locations

Willingdon Avenue

Eton Street

Rosser Avenue



## LEGEND

- |  |  |  |  |  |
|--|--|--|--|--|
|  |  |  |  |  |
|  |  |  |  |  |
|  |  |  |  |  |

**FIRE - DIAL 5555**  
**FIRST AID - DIAL 4050 - 24 HOURS**

BURNABY TERMINAL  
 4403 ETON STREET  
 BURNABY BC





# Facility Orientation

## ▪ **Training Requirements:**

- Drivers safety program. (Site Orientation, Canadian Fuels Certified, training videos, observed training loads, current BCDL). PPE required: FR coveralls, hardhats, safety boots, safety glasses, gloves
- Tanker truck equipment is certified and annually inspected as per Transport Canada Regulations CSA B620
- Contractors: Site Orientation. Trained on the Loss Prevention System. All maintenance work requires adherence to Safe Work Permits
- Visitors : Site Orientation. Visitor sign in log

## ▪ **Scale:**

- The terminal hosts the truck scale for the Refinery. Various products like asphalt are sold by weight

## ▪ **Emergency Contact Information:**

Dial 911: Burnaby RCMP, Burnaby Fire Dept., Chevron Fire Dept.

EMERGENCIES CONTACT: 5555 to report Fire, 4050 to report Injuries. The Refinery has 24/7 First Aid available

# Emergency Equipment



Emergency Shut Downs and Fire Alarms are situated throughout the facility

Water / Fire Foam deluge systems are connected to a sensor system that covers the load rack. There are emergency phones, water monitors, eye wash stns and fire extinguishers

# Burnaby Terminal Product Receipts



## Product Receipts

- Burnaby Terminal receives Mogas, Diesel, B100 Biodiesel and Ethanol by pipeline from the Burnaby Refinery tanks
- Techron gasoline additive, generic additive and red dye are received by truck and stored in underground additive tanks.
- Mogas additives are injected into the fuel as it loads at the loading rack

## Biofuels Receipts

- Burnaby Terminal receives the B100 Biodiesel and Ethanol by truck for off-loading and pumping into the Burnaby Refinery tanks.
- Biofuels such as Biodiesel and Ethanol are injected into the fuel as it loads at the loading rack



# Burnaby Terminal Throughput 2015



Average Throughput	Average Throughput (2015) Comprises of the following
<ul style="list-style-type: none"><li>▪ ~ 80 loads per day</li><li>▪ ~ 360 BBL per truck</li><li>▪ 22 MBBL per day</li><li>▪ 8.014 MMBBL per year</li><li>▪ Daily volumes depend somewhat on the street price of mogas</li></ul>	<ul style="list-style-type: none"><li>▪ B5 Diesel: 2.795 MMBBL</li><li>▪ Mogas: 5.219 MMBBL</li><li>▪ The split of product is 65% mogas and 35% diesel.</li></ul>
Customers	
<ul style="list-style-type: none"><li>▪ Chevron Retail Stations</li><li>▪ Chevron Card Locks</li><li>▪ Chevron Commercial Customers</li></ul>	<ul style="list-style-type: none"><li>▪ Exchange Customers: Husky Oil, Suncor, Esso, Shell</li><li>▪ Diesel Resellers: Proquip, 4Refuel</li></ul>

# The Loading Rack



**Truck Overfill Protection**



**Touch screen interface**



**Digital Meters**



**Bottom Load / Vapour Recovery**

# The Loading Rack



- Fuel vapours from loading are collected per Metro Vancouver regulations: All trucks must use vapour recovery
- 3 Product loading lanes
- Bottom loading at all lanes
- Mogas (Reg E10, Supreme Plus) and B5 Diesel only
- All trucks must drain before loading
- Overfill protection systems on all loading arms
- Product meters are calibrated to Weights and Measures regulations three times a year

# The End – Thank you!



# Questions?