

Burnaby Refinery  
Community Advisory Panel (CAP)  
Seep Update

May 2, 2012





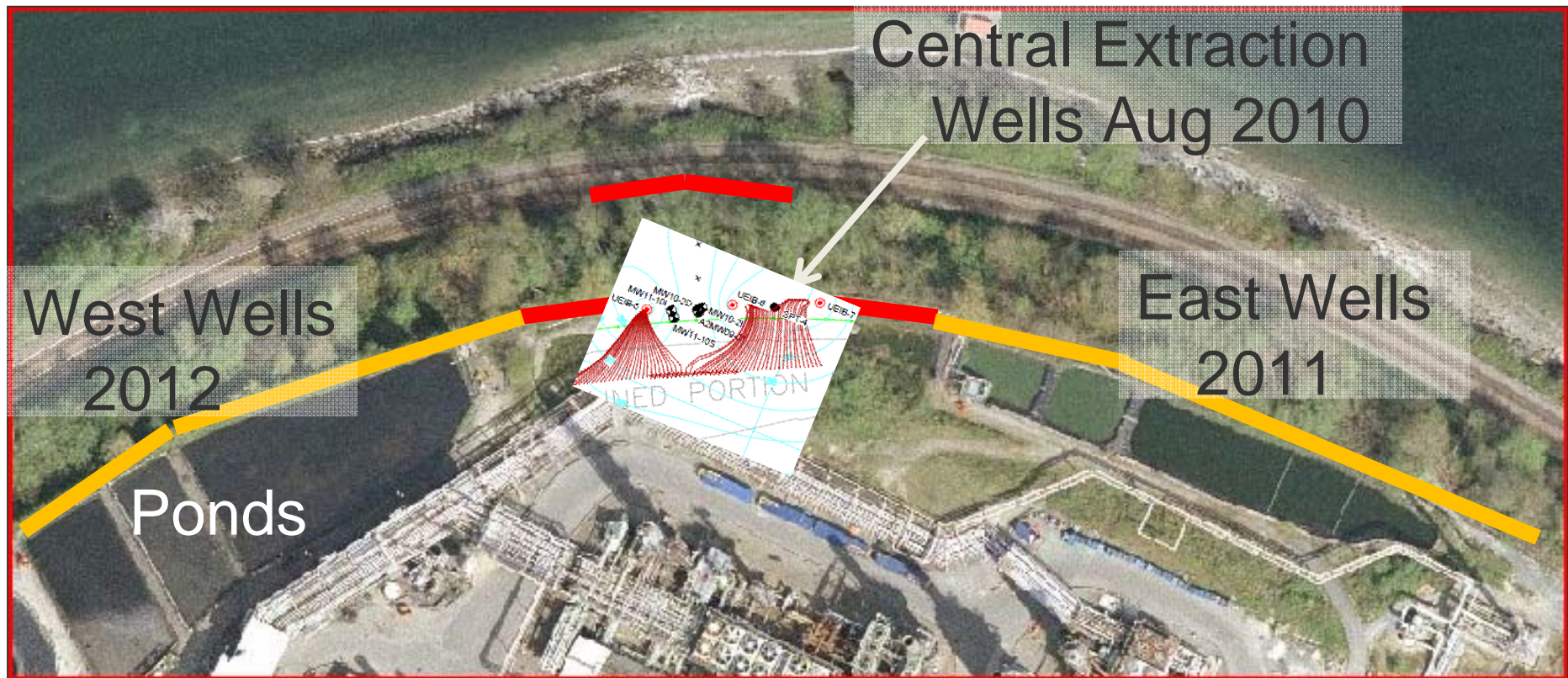
# Foreshore Updates – Interim Remedial Action

Interim Remedial Action ([IRA](#)) barrier

- Some seep material was found just outside the barrier in the anchor trench;
- Upgrades completed, including removal of seep material outside the barrier



# Perimeter Extraction System



The extraction wells have been undergoing extensive testing, and are effective at preventing further offsite migration of contamination.

[INSET shows model illustration of converging flow paths to extraction wells., based on field data]

# Foreshore Updates – Risk Assessments



- Human Health and Ecological Risk Assessments Problem Formulation reports have been submitted to the regulators and posted on the CAP Web site.

*Problem formulation is the first step in a risk assessment. It looks at chemical analyses together with who or what might be exposed to any concentrations and determines if further assessment is warranted.*

- The risk in both problem formulations appears low, but the Ministry of the Environment has requested further study, including potential effects on shellfish.